



**BuiltHub is a Horizon 2020 project that is developing a community of data contributors and users, with the overarching goal of driving forward the energy transition and the decarbonisation of the EU building stock.**



BuiltHub has received funding from the European Union's Horizon 2020 programme under grant agreement N°957026.

## About us

The BuiltHub consortium is committed to harnessing the enormous potential of European buildings to create an intelligent and carbon-neutral built environment. Coordinated by Eurac Research, the project is comprised of experts from research centres, not-for-profits and specialist consultancies.

Our individual expertise and stakeholder communities ensure the practicality and accessibility of the final outcomes of the BuiltHub project.

Want to learn more about the BuiltHub project or partners?

## Contact us



Twitter: [@BuiltHub\\_EU](https://twitter.com/BuiltHub_EU)



LinkedIn: [BuiltHub project](#)



YouTube: [BuiltHub project](#)



CARTIF

eurac  
research



NTT DATA

RI  
SE

TEAM  
sympraxis

TU  
WIEN TECHNISCHE  
UNIVERSITÄT  
WIEN

[builthub.eu](https://builthub.eu)



 **BuiltHub**



# Better data for EU buildings.

Working for more sustainable and meaningful data flow for a cost-effective and rapid building stock decarbonisation

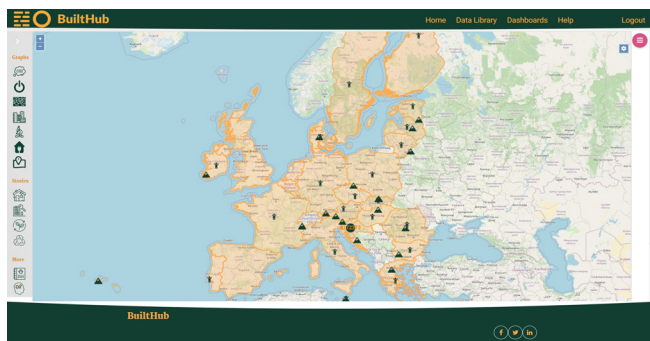
[builthub.eu](https://builthub.eu)

## About the Platform

The project is developing an inclusive data collection and valorisation method in an accessible web-based Platform, enabling a succinct assessment of Europe's building stock.

It will support a long-lasting flow of data through a benefits-based engagement strategy, and ultimately lead to standardised data governance and service.

BuiltHub is drawing on and feeds into existing data sets and repositories, such as the EU Building Stock Observatory and Horizon 2020 sister projects BIGG, MATRYCS and BEYOND.



## Why it matters

Stakeholders are able to export, filter and visualise open building energy performance data.

BuiltHub Platform users can directly evaluate this data against key performance indicators, scenario building and market and investment parameters.

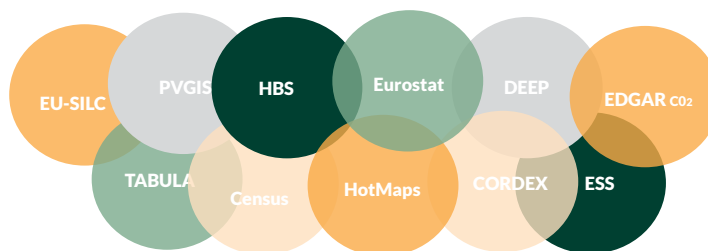
Use of the Platform helps to identify the renovation and retrofitting potential of our buildings and define tailor-made energy measures, and develop suitable business models, policies and finance strategies to implement them.

## Data characteristics

The BuiltHub Platform is a repository for various types of building and energy-related data. Datasheets can be uploaded manually, using Odata or with the web URL.

The Platform already includes the following, and more:

- Building stock related datasets, such as:
  - HotMaps and TABULA projects
  - De-risking Energy Efficiency Platform
- Socio-economic datasets, such as:
  - EU statistics on income and living conditions
  - Household budget survey
- Climatic datasets, such as:
  - EDGAR CO<sub>2</sub> Emissions
  - PVGIS



## Filtering and sorting data

Through various dashboards and graphs, you can view:

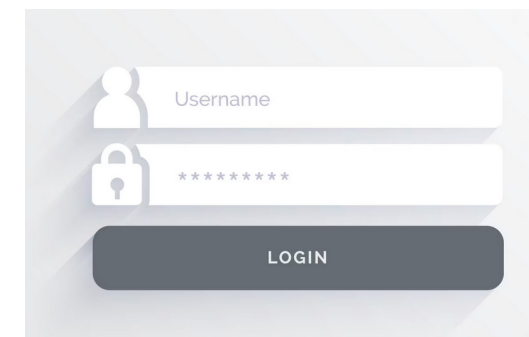
- Energy poverty graphs
- Building renovation and construction graphs
- Building and energy consumption tables
- Interactive visualisation of geoinformation

Data can be sorted and displayed according to energy carrier, climatic region, consumption or sector type, building type, municipal, district or national level.

## Get access!

The BuiltHub Platform available to all.

Go to: [platform.builthub.eu](https://platform.builthub.eu) to get your user name and password, and start testing today! Send us any feedback and questions at: [info@builthub.eu](mailto:info@builthub.eu)



## Get involved!

Keen to make the best use of your data or actively support and shape the design of key Platform features?  
**Join our BuiltHub Pioneer User group!**

Interested in the project and inspired to help promote responsible data collection?  
**Become a BuiltHub Ambassador!**

Learn more on our website [builthub.eu](https://builthub.eu) or find us at an upcoming event in person or online.

[builthub.eu](https://builthub.eu)